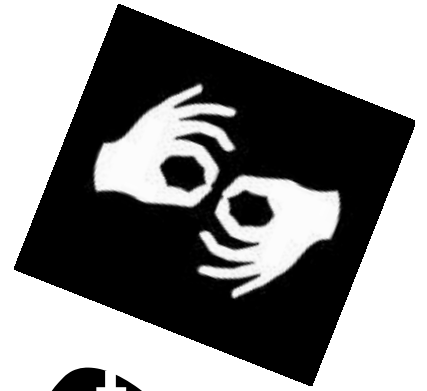


Church Interpreter Training Institute Michigan



SIGN LANGUAGE STUDENTS:

Are you familiar with the signs used in a church service? CITI is a program that has been taught at the Concordia Seminary in Ft. Wayne for over 25 years. This program is coming to Michigan in order to better accommodate Michigan church interpreters.

Highlights

- Church vocabulary taught at different levels to accommodate the beginner as well as the advanced student
- This program is especially useful for interpreting liturgically based services.
- All classes led by instructors with many years of church interpreting experience!

- CITI Michigan will take place at **Christ the King Lutheran Church** in Flint, Michigan, **April 18-20th**. Activities begin Friday evening and will end Sunday after lunch.
- For more information contact: Sue Herald email: sueherald@elms4deaf.org
- Weekend cost: \$275. Includes tuition, hotel, Sat. & Sun. lunch (and breakfast in hotel). Partial scholarships available for members of Lutheran congregations.
- Hosted by Ephphatha Lutheran Mission Society and with special thanks to The Mill Neck Foundation and the Lutheran Women's Missionary League.
- An application can be downloaded at: elms4deaf.org/citi